



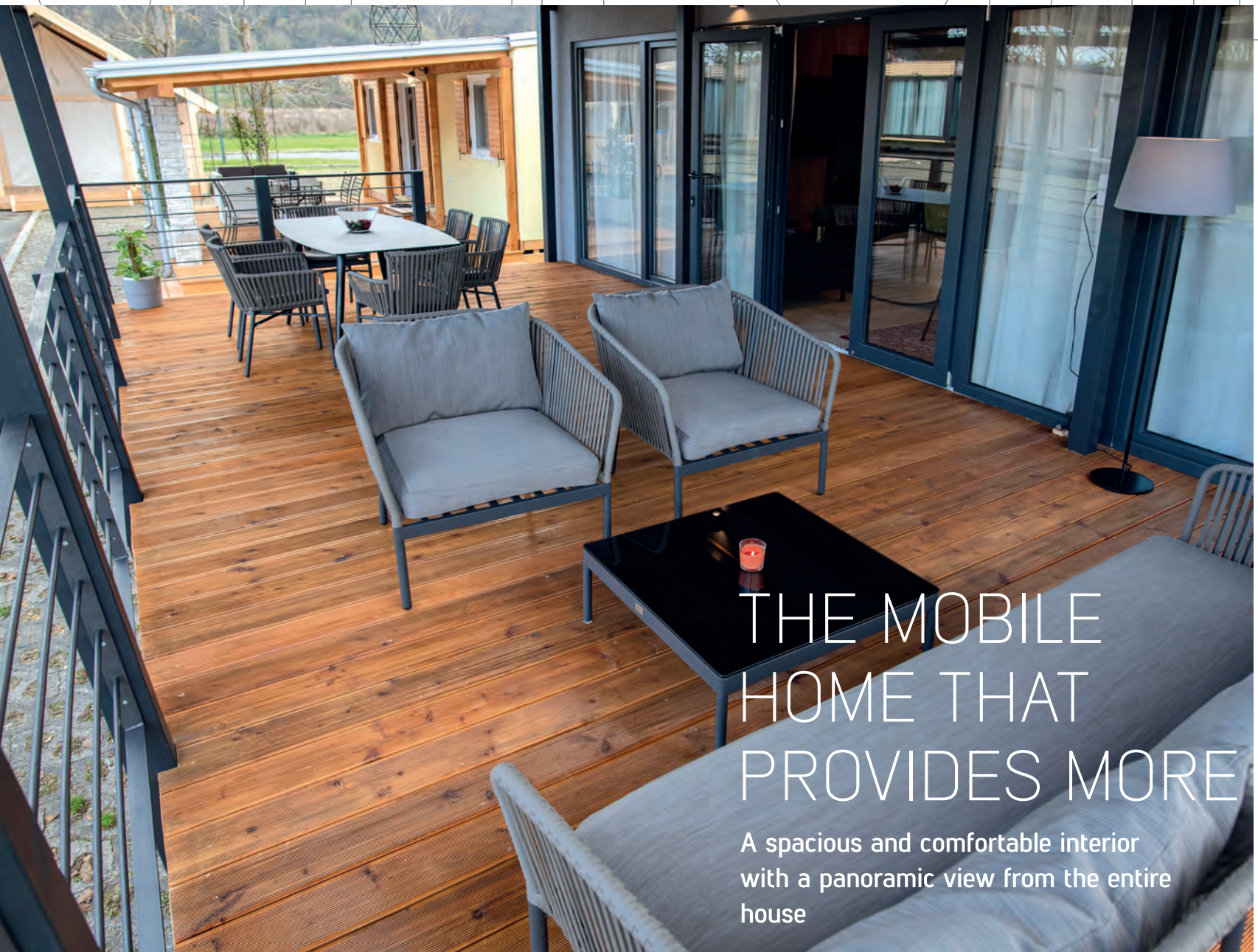
PRESTIGE MOBILE HOME

VILI CHIC



IDEA **MOBILE** HOME

VILI CHIC



THE MOBILE HOME THAT PROVIDES MORE

A spacious and comfortable interior with a panoramic view from the entire house



Mobile home Vili Chic with a size of 42 m² is in ideal dimension for a comfortable holiday. Vili Chic is exactly what its name is saying, a prestigious and luxurious mobile home that includes natural materials, simple design, comfort in chic style of the 21st century and a balanced combination of colors with some highlighted detail of more intense color ratio.

With two bedrooms, two bathrooms and a completely equipped kitchen providing all conditions needed for a luxurious holiday. Inside the house, you can relax and enjoy in an elegant boem chic trendy interior, or outdoors on a large, luxurious, covered terrace of 34 m² which provides the possibility of staying in nature in all weather conditions.



V L C H



LIVING ROOM & KITCHEN

Thanking the large glass panels, the panoramic view extends from the whole home. Large living room with dining furniture of warm colors as an accent to a chic style. The kitchen has a dishwasher, cooking plate, stove with a hood and refrigerator with freezer and dining table with 4 chairs. As in other homes, there are ventilation openings in the ceiling and floor to prevent moisture and heat. Air conditioner for cooling or heating placed on the wall above the main entrance, which has built – in time off switch due to open doors and open windows.



C



BEDROOMS

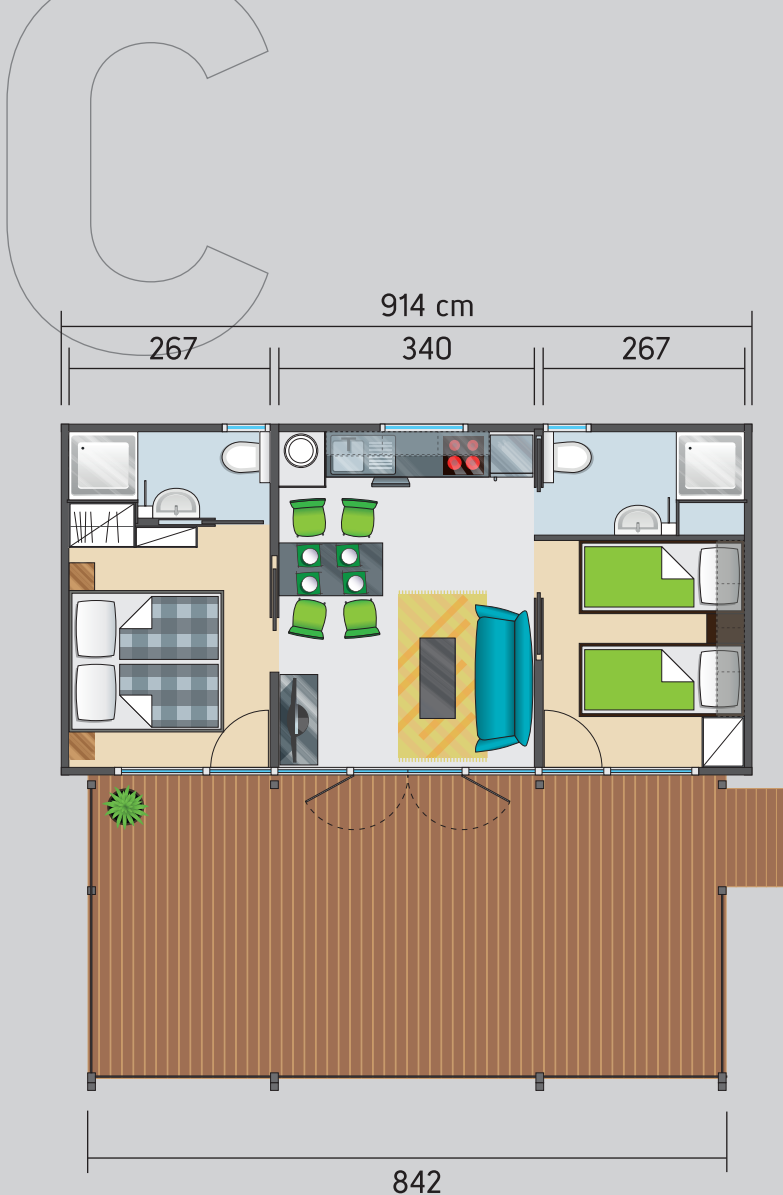
High pressure technology allows for good thermal insulation, so you can comfortably stay here and not worry about sleeping in the mobile home. The Vili mobile home has two bedrooms and a sofa bed for two in the living room. The bedroom has a double bed of 180 × 200 cm, and in the second bedroom there are two single beds of 90 × 200 cm, which can be joined into one if needed.

BATHROOMS

The Vili Chic mobile home has two bathrooms with a bath block, an enclosed shower and a flush toilet. The bathrooms are equipped with a hotel hair dryer, extra sockets and towel rails.

W L C H





TECHNICAL DATA

Dimensions: 910×460 cm, 42 m²
 Inner ceiling height: 235/260 cm
 Capacity: 4+2 persons

Roof terrace, dimensions: 840×400cm, 34m²

Height, dimensions: 270/240 cm

Wooden floor made of larch.
 Wooden fence made of spruce.

Fence with aluminium tubes
 Metallic chassis.

Sandwich wall panel, 11 cm intersection.
 Isolation 8 cm, styrofoam.

Sandwich ceiling panel, 12 cm intersection, 10 cm
 insulation, styrofoam.

High quality PVC and wood joinery, with double
 insulated glass.

Repellent acrylic facade.

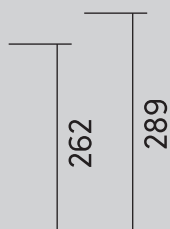
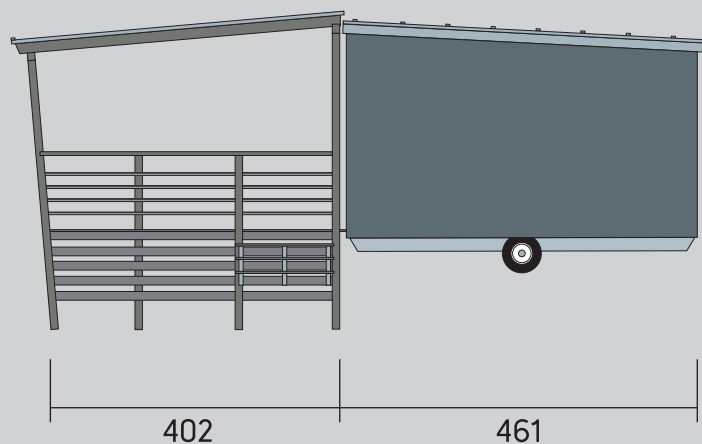
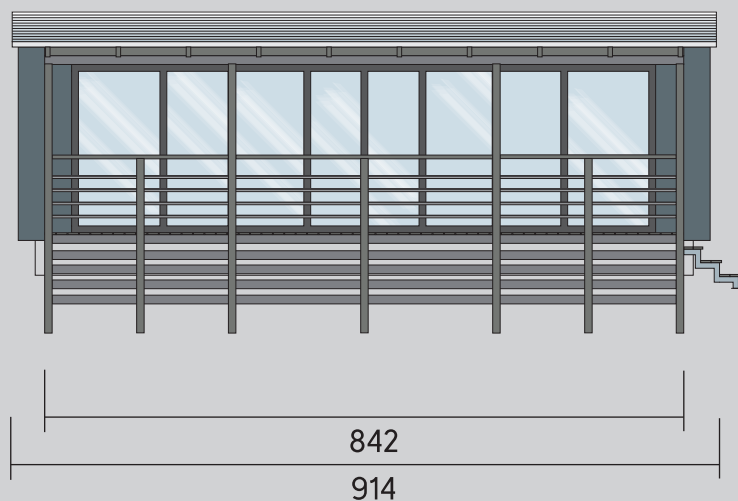
Ventilation grilles in the ceilings and the floors to
 prevent moisture retention and help control the
 temperature.

Cool roof with a colored trapezoidal steel tin.
 Fascia, gutters and pipes made of colored steel tin.

EQUIPMENT



***OPTION**





IDEA **MOBILE** HOME

HEADQUARTER:
Sv. Nikole Tavelića 29
10000 Zagreb, Hrvatska

CONTACTS:
gsm1: + 385 98 775 904
gsm2: + 385 91 3496 697
tel/fax: +385 1 55 30 261
idea-forma@idea-forma.hr
www.ideamobilehome.hr
www.idea-forma.hr

PRODUCTION:
Kolodvorska 14
49240 Donja Stubica
Hrvatska / HR