



EXCLUSIVE MOBILE HOME

MATIJA



IDEA **MOBILE** HOME

MATJA



A VACATION COMBINING LUXURY WITH NATURE

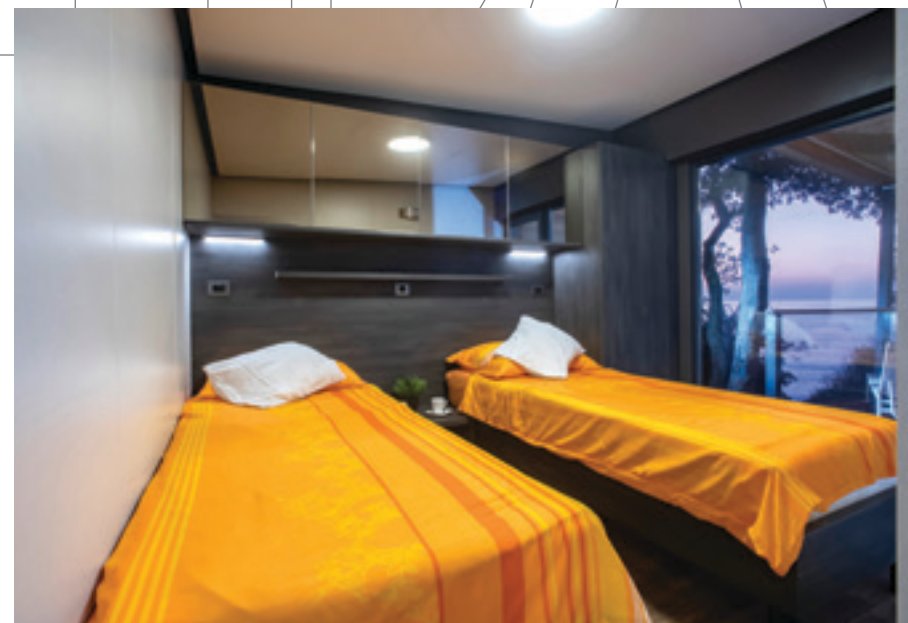
The exclusive, luxury mobile home Matija is intended for family vacations. It is a gorgeous family house where every family member can find enough room for themselves. It provides all necessary comforts alongside an undisturbed enjoyment of its surroundings. The front facade is dominated by a glass wall, allowing the touch of nature to spread throughout the home.

Both the large surface area and the high ceilings provide the sense of spaciousness. This is far from the concept of a classic mobile home. It is attractive but unobtrusive. Ventilation grilles in the ceilings and the floors of the house improve the air quality, as well as preventing moisture retention and helping to control the temperatures. The house has an air conditioner and heating unit with a built-in delayed off-switch, for when you open doors or windows. This mobile home is modular and although the dimensions are the largest of those we offer, it fits in with nature perfectly. It is easy to maintain and to renovate both the interior and the exterior.

TERRACE

The luxurious roof terrace provides the sense of being immediately in nature while maintaining privacy and shelter. You can spend the whole day on the terrace enjoying the surroundings. It is made of a combination of natural wood (there is also the option of plasticized metal profiles) and tempered transparent glass. The cool roof has a colored trapezoidal steel tin.

MARJANA



BATHROOMS

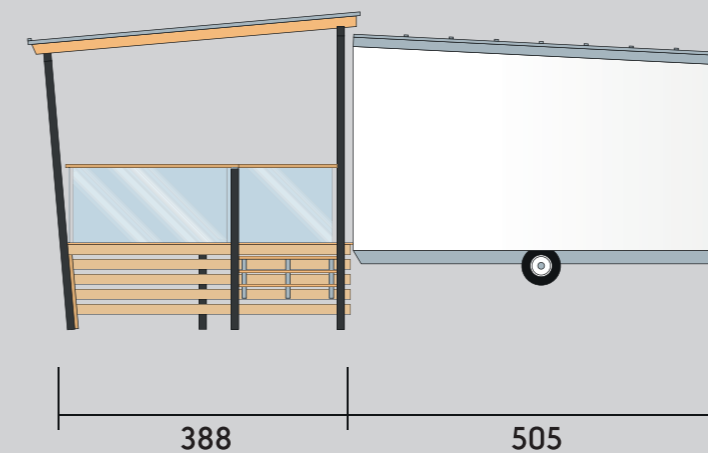
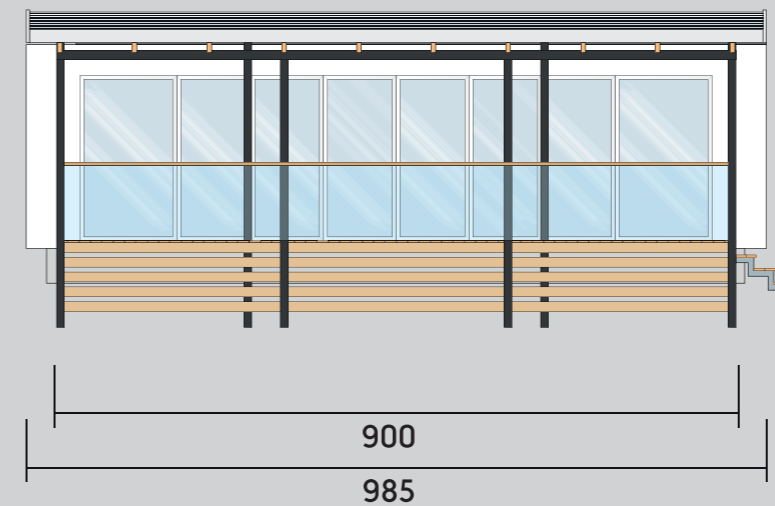
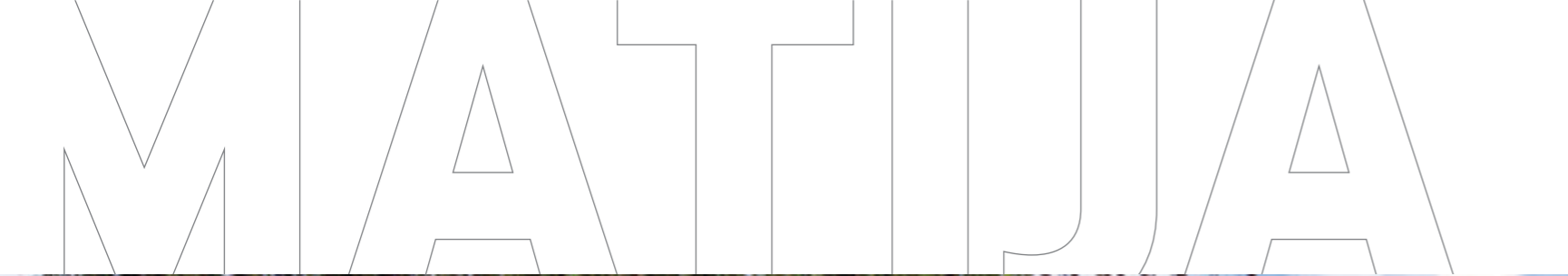
There are two state-of-the-art bathrooms equipped with a bathroom block, an enclosed shower and a flush toilet. The bathrooms come equipped with hair dryers and enough sockets for other small appliances.

BEDROOMS

Furniture is elegant and matches the style of the rest of the house, simple and designed with impeccable taste. In the master bedroom there is a large bed, measuring 180 x 220 cm, and a 60 cm semi built-in wardrobe. In the second bedroom, the dimensions of the single beds are 90 x 220 cm, and they can be easily joined into one double bed.

LIVING ROOM & KITCHEN

The unforgettable pleasure of staying in this house is even further emphasized in the combined living room and kitchen. The large living room has a corner sofa bed and a table with four chairs. The kitchen has all the necessary technology and fits in the dishwasher, cooking plate, stove and refrigerator with a freezer. (There is also a option of adding a washing machine).



TECHNICAL DATA

Thanks to the use of innovative technology, our mobile homes are created out of three separate modules. Regardless of size, the modules are assembled into one unit without the use of heavy machinery.

The mobile home and the terrace easily adapt to the location, with maximum preservation of the natural environment.

Home dimensions: 985x505 cm, 50 m²

Interior ceiling height: 235/260 cm

Capacity: 4+2 persons

Roof terrace, dimensions: 900x400cm, 36m²

Height: 280/240 cm

Wooden floor made of profiled larch.
Transparent tempered glass fence.

Cool roof with a colored trapezoidal steel tin.
Metallic chassis.

Sandwich wall panel, 11 cm intersection.
Isolation 8 cm, styrofoam.

Sandwich ceiling panel, 12 cm intersection,
10 cm insulation, styrofoam.

High quality PVC and wood joinery, with double insulated glass.

Repellent acrylic facade.

Ventilation grilles in the ceilings and the floors to prevent moisture retention and help control the temperature.

Cool roof with a colored trapezoidal steel tin.
Fascia, gutters and pipes made of colored steel tin.

EQUIPMENT



***OPTION**



IDEA **MOBILE** HOME

HEADQUARTER:
Sv. Nikole Tavelića 29
10000 Zagreb, Hrvatska

CONTACTS:
gsm1: + 385 98 775 904
gsm2: + 385 91 3496 697
tel/fax: +385 1 55 30 261
idea-forma@idea-forma.hr
www.ideamobilehome.hr
www.idea-forma.hr

PRODUCTION:
Kolodvorska 14
49240 Donja Stubica
Hrvatska / HR