



PRESTIGE MOBILE HOME

VILI



A spacious and comfortable interior with a panoramic view from the entire house



This prestigious 42 m² mobile home is ideal for family vacations, for families of two and more children, as well as for young couples. It is intended for everyone who strives for more. For the adventurers who also want maximum comfort, this is provided by the two bathrooms, and a living room with a fully equipped kitchen. On a sunny or a rainy day spent on the terrace of the mobile home, you will feel the immense enjoyment of time spent in nature.

TERRACE

The warmth and cosiness of real wood is an important characteristic of the whole house, but it especially dominates the terrace that is made entirely of profiled larch. The terrace fits a table with lounge chairs, armchairs and a couch for resting. The spacious terrace serves as an extra living room with a surface area of 34 m².

THE MOBILE HOME THAT PROVIDES MORE

Spending a vacation in the Villi mobile home means entering into perfect dialogue with nature. The home fits seamlessly into the environment, and does not impose itself upon it, and this moment of intertwining the home with nature is one of the most important goals of architecture.



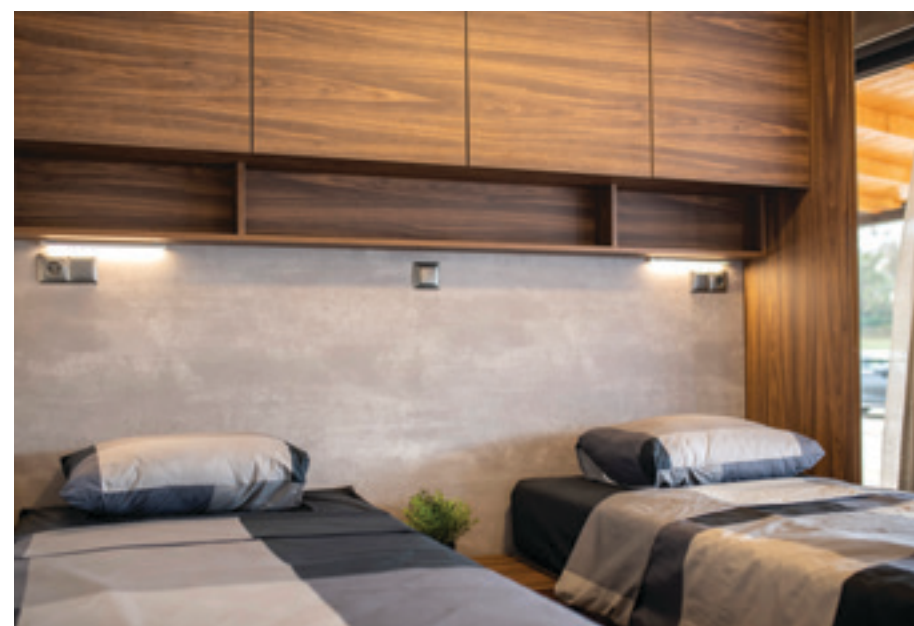


BATHROOMS

The Vili mobile home has two bathrooms with a bath block, an enclosed shower and a flush toilet. The bathrooms are equipped with a hotel hair dryer, extra sockets and towel rails.

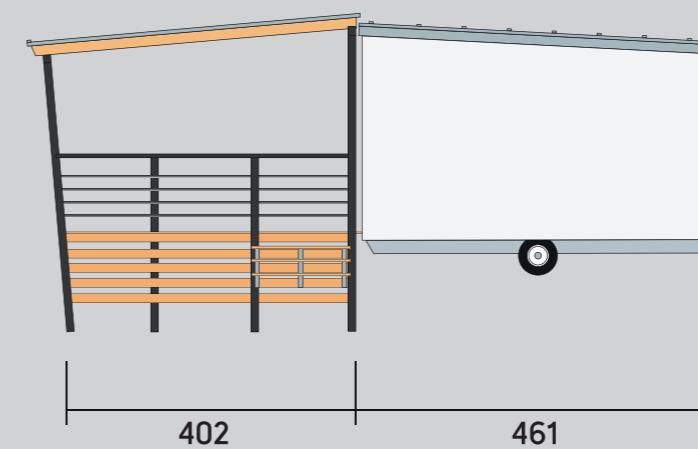
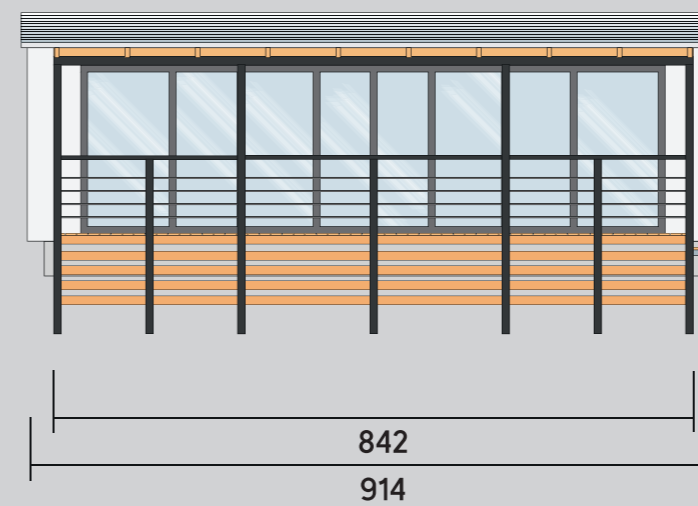
BEDROOMS

High pressure technology allows for good thermal insulation, so you can comfortably stay here and not worry about sleeping in the mobile home. The Vili mobile home has two bedrooms and a sofa bed for two in the living room. The bedroom has a double bed of 180×200 cm, and in the second bedroom there are two single beds of 90×200 cm, which can be joined into one if needed.



LIVING ROOM & KITCHEN

Thanks to the large glass walls, the panoramic view is visible from every room of the house. The large living room with a dining area captures the eye with simple and elegant furniture lines, but also with its range of facilities. The kitchen has a dishwasher, a cooking plate, an oven, an exhaust hood, and a refrigerator with a freezer. A particularly charming detail is the bar table with four chairs in the kitchen. Like in our other homes, there are ventilation grilles in the ceilings and floors that prevent moisture retention and help control the inside temperature. An air conditioner and heating unit is installed on the living room wall, with a built-in delayed off-switch, for when you open doors or windows.



TECHNICAL DATA

Dimensions: 914x460 cm, 42 m²
 Inner ceiling height: 235/260 cm
 Capacity: 4+2 persons

Roof terrace, dimensions: 840x400cm, 34m²

Height, dimensions: 270/240 cm

Wooden floor made of larch.
 Metal galvanized plastic fence.

Cool roof with a colored trapezoidal steel tin.
 Metallic chassis.

Sandwich wall panel, 11 cm intersection.
 Isolation 8 cm, styrofoam.

Sandwich ceiling panel, 12 cm intersection, 10 cm insulation, styrofoam.

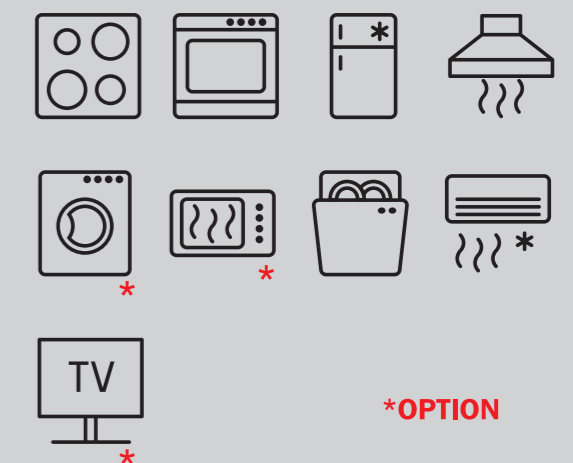
High quality PVC and wood joinery, with double insulated glass.

Repellent acrylic facade.

Ventilation grilles in the ceilings and the floors to prevent moisture retention and help control the temperature.

Cool roof with a colored trapezoidal steel tin.
 Fascia, gutters and pipes made of colored steel tin.

EQUIPMENT



*OPTION



IDEA **MOBILE** HOME

HEADQUARTER:
Sv. Nikole Tavelića 29
10000 Zagreb, Hrvatska

CONTACTS:
gsm1: + 385 98 775 904
gsm2: + 385 91 3496 697
tel/fax: +385 1 55 30 261
idea-forma@idea-forma.hr
www.ideamobilehome.hr
www.idea-forma.hr

PRODUCTION:
Kolodvorska 14
49240 Donja Stubica
Hrvatska / HR